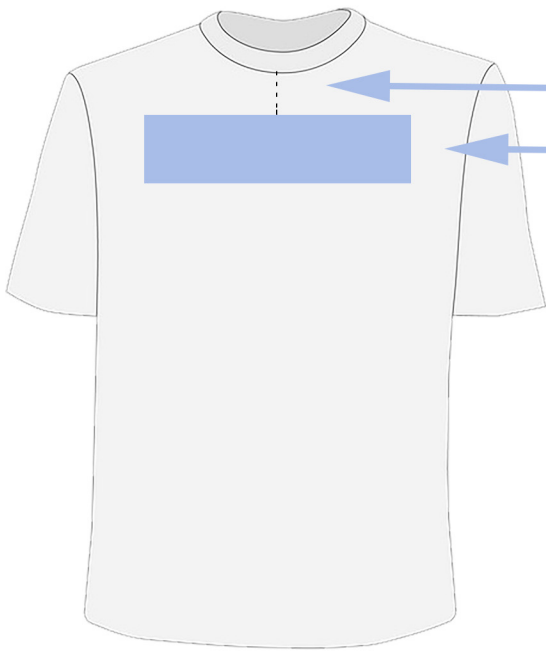


Upper Chest Print

Adult, 3" drop. Womens & Youth, 2" drop.

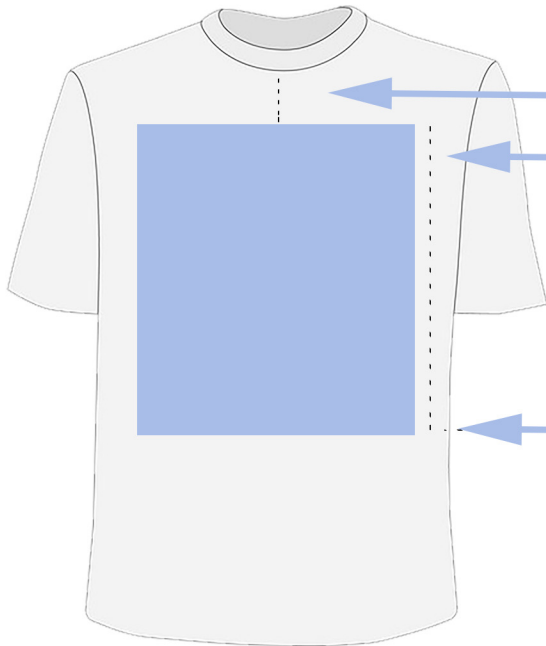


Typical Artwork Widths

- ★ Adult Unisex: 9.5" - 12"
- ★ Womens: 8.5" - 10"
- ★ Youth: 6.5" - 9"

Full Chest Print

Adult, 3" drop. Womens & Youth, 2" drop.



Typical Artwork Widths

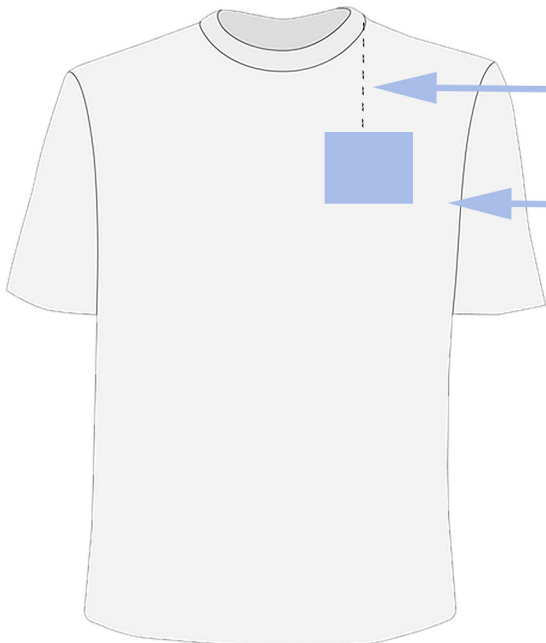
- ★ Adult Unisex: 10" - 12"
- ★ Womens: 9" - 10.5"
- ★ Youth: 7" - 9"

Typical Heights: 11" - 14"

Left Chest Print

6" drop from the edge of the collar.

Center artwork using edge of the collar.

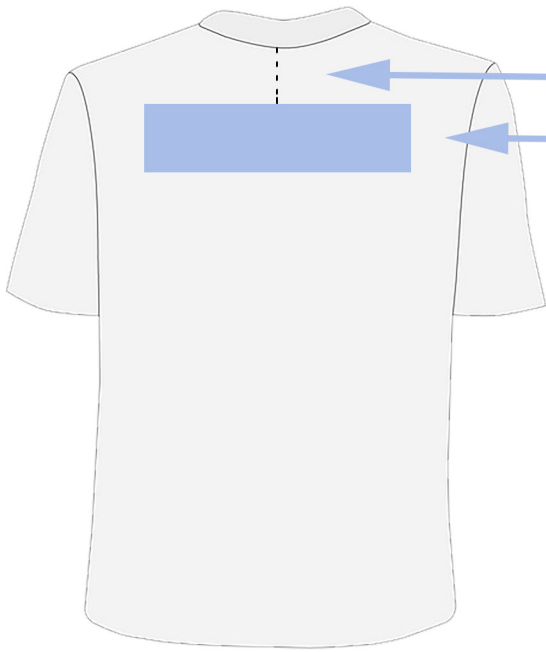


Typical Artwork Widths

- ★ 3.5" - 5"

Upper Back Print

4.5" drop. Womens & Youth, 3.5" drop.

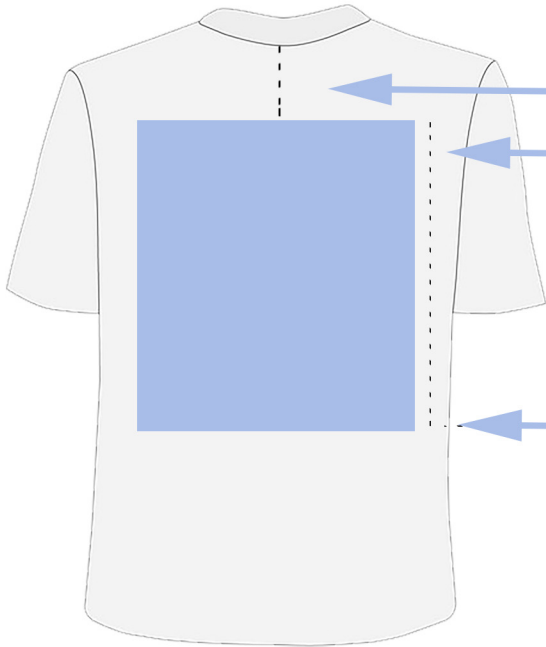


Typical Artwork Widths

- ★ Adult Unisex: 12" - 14"
- ★ Womens: 10" - 12"
- ★ Youth: 8" - 10"

Full Back Print

4.5" drop. Womens & Youth, 3.5" drop.



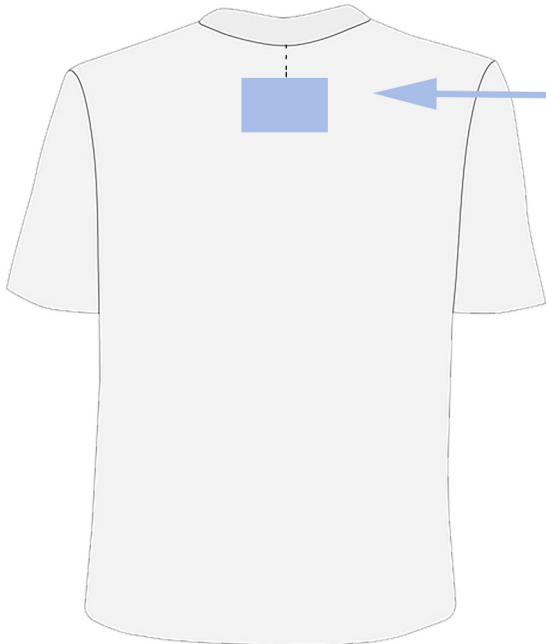
Typical Artwork Widths

- ★ Adult Unisex: 10" - 12"
- ★ Womens: 9" - 10.5"
- ★ Youth: 7" - 9"

Typical Heights: 11" - 14"

Neck Print

1.5" - 2" drop

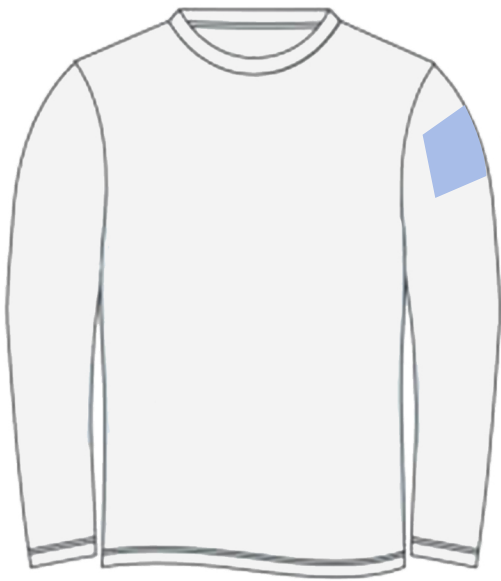


Typical Artwork Widths

- ★ 2.5" - 5"

Upper Sleeve Print

2" drop. Womens & Youth, 1.5" drop

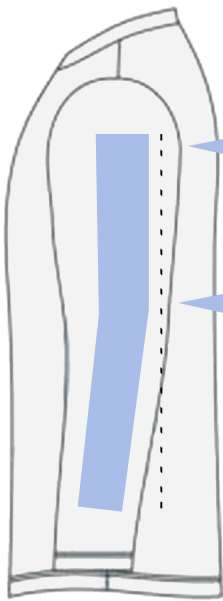


Typical Artwork Widths

★ Adult Unisex: 2.5"-3.5"

Full Sleeve Print

Centered on sleeve



Typical Artwork Widths

★ Adult Unisex: 1.5"- 3"

Typical Heights: 14"-20"

Vertical Print

1.5" - 2" drop

Typical Artwork Widths

★ 2.5"- 5"

